

Directions for ITH Auvi-Q Pouch *Project and Designs by Loraine Meyer*

Supplies needed:

- 7" x 7" firm cutaway stabilizer (or batting for a softer feel)
- Fabric 7" x 7" folded in half
- Two pieces of fabric 6" x 6" each
- One 6" strip of 3/4" sew-on hook and loop fastener (Velcro)
- Two pieces of tearaway stabilizer for the 5x7 hoop
- Bobbin with matching thread color to the stitching thread



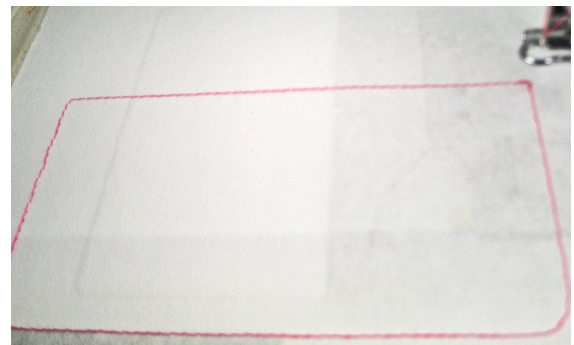
This pouch will stitch completely in two hoopings. There are several thread color changes in the design, but the thread changes are just for color stops in the stitching. You can use the same thread in the top of your embroidery machine for all parts except the front design. Initially, load regular bobbin thread. The only place necessary to use the matching bobbin thread is when stitching the satin decorative edging on the second hooping.

The files have the red medic cross design stitching but can of course be replaced in that stitch position with any personalization or other design you desire.

You will stitch the smallest section first.

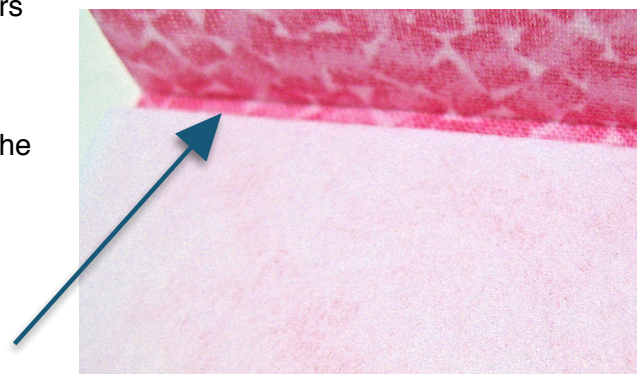
FIRST HOOPING

Hoop one piece of tearaway stabilizer in your 5x7 hoop. Stitch the first thread color. This will give you guidelines to lay your fabric.



Using the 7x7 fabric, fold in half lengthways with top side out, iron to create a sharp fold in the center. Lay the 7x7 stabilizer between the layers with the edge completely up to the fold.

Lay the folded fabric/stabilizer with the fold on the straight edge of the sewn outline and fabric completely covering the rest of the stitched outline.



The second thread color will secure the fabric to the stabilizer and then stitch the outline needed for velcro placement.

Place the “soft” strip on velcro and tape it into place with the fuzzy side up. Make sure you place the tape outside of the stitch area.



Stitch the next color which will secure the velcro.

The final thread color will stitch around the velcro again to ensure it doesn't pull loose.

Remove from hoop and tear off the stabilizer. There will be minimal stabilizer that will be showing where the velcro stitches down. This side will actually be inside of the pouch and will not show.



Trim the three sides, keeping a 1/4" sewing margin outside of the stitched lines. Keep the cutaway stabilizer you just cut from the first piece close as you will be using it on the second section.

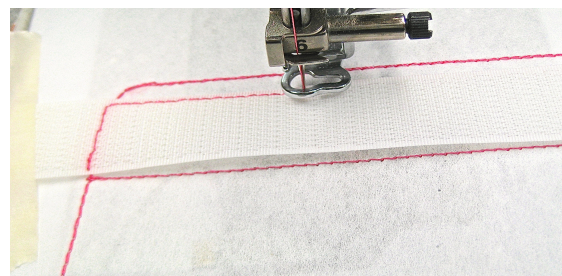
Put this section aside and hoop a second piece of tearaway stabilizer.

SECOND HOOPING

Stitch the first thread color. This will give you the outline of the section as well as velcro placement.

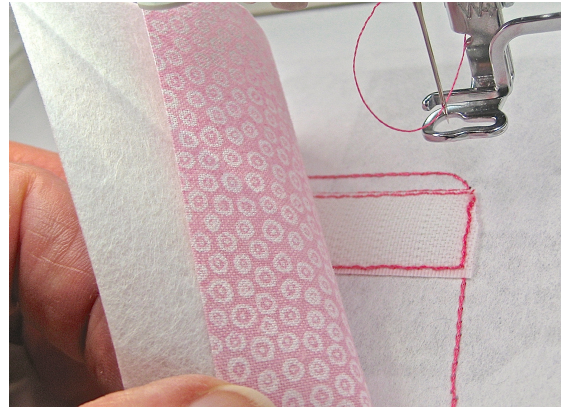
Lay the velcro between the guidelines with the bristles down. Tape into place, just keep the tape outside of the stitching area.

The second color will stitch the velcro down to the stabilizer.



Trim the two edges of the velcro as closely as possible to the stitchdown.

Place the fabric (face down) which will be the inside of the pouch on top of the stabilizer. This will cover the velcro. Make sure it completely covers the outside stitched guidelines for this section. Place the cutaway stabilizer over this, once again make sure it covers the entire stitched guideline area.

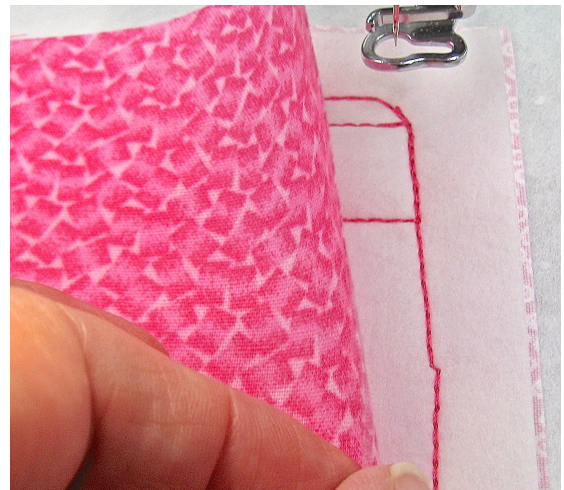


The next color will secure these two down. The third and fourth colors will secure the velcro to the fabric and stabilizer. *(They are done in different thread colors simply to give you an easy stopping point to make sure all is being secured correctly before stitching the velcro around multiple times. All of these steps are actually stitched with the same thread color in the top of your machine.)*

Place the top fabric (face up) over the cutaway stabilizer you just stitched down, making sure it covers the complete stitched guideline.

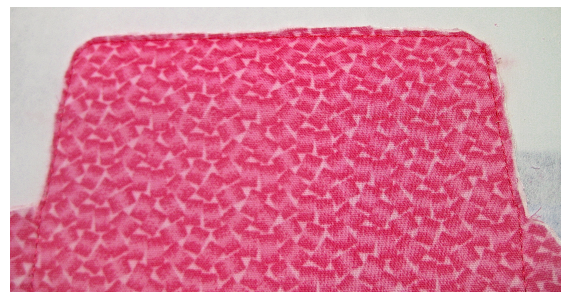
After stitching the next color, your fabric will be completely secured to the tearaway stabilizer in the hoop.

Remove the hoop from your machine (DO NOT remove the stabilizer from the hoop yet!) and trim closely around the top flap portion of it. No need to trim the bottom part at this point..



You will want to trim closely since the flap portion will be finished off with a satin appliqué edging.

At this point, load the matching bobbin thread and stitch the satin applique edge.

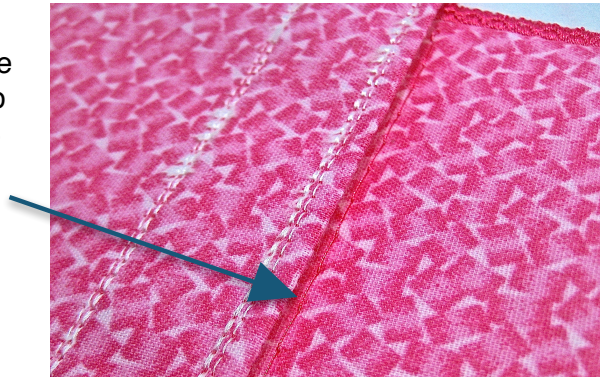


Reload standard bobbin thread back into the machine.

The next color will be a basting stitch to help with placement of the first section you made but do not place it yet.

After the basting stitch, stitch any personalization or design you want. The red medic cross is in this stitch file.

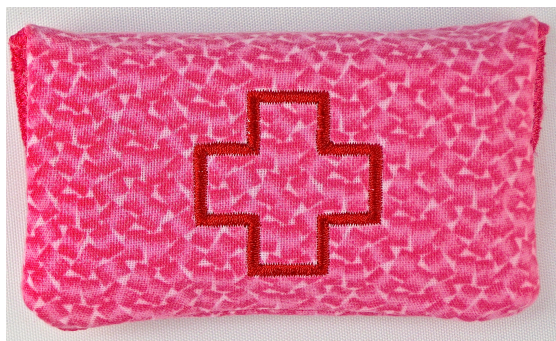
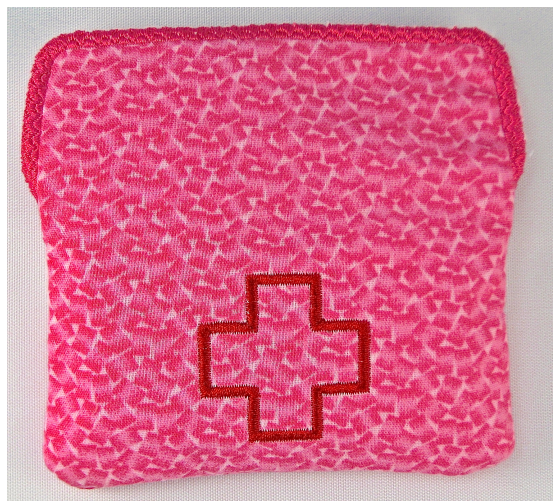
Once you have added your personalization, lay the first section on top with the straight folded edge up against the basting stitch. Make sure the velcro is facing the bottom piece still secured in the hoop. Center so it is completely covering both sides with enough on both size for stitching.



The last color will secure the two sections together.

Remove from the hoop, remove the basting line, tear away the stabilizer, trim the sewn seam and flip it inside out. You are finished!





Enjoy!

ArtisticThreadWorks.com

HollysDesignStudio.com